

Galley Road Light Industrial Condos

4725 GALLEY ROAD, COLORADO SPRINGS, CO 80915



Overview

Now available for pre-construction sale.

4725 East Galley Road is located at the corner of Galley & Wooten.

This new development consist of 25 separately platted industrial/warehouse condominiums with fenced yards, all zoned BP SS AO APZ2 which allows for office, light industrial, and light manufacturing, but no auto repair related uses.

Each 1,000 SF unit is equipped with a 12' overhead door, man door, private office, private bathroom, plumbing, electric, etc.

This is the perfect choice for someone looking for a small industrial warehouse on a budget. We're the commercial building version of a tiny house. We're building affordable commercial property.

Pricing starts at \$250,000 per unit plus \$125,000 for a private fenced yard. Financing could be available from Farmers State Bank in Calhan. Normal terms are 25% down, market rates, and fully amortizing 20 year loans.

Because these units are part of a condominium project, there will be a condominium owner's association. The associate will pay for property insurance, exterior building maintenance, and landscaping. The estimated HOA fees will be around \$100 per month. Property taxes will likely run around \$2.00 per square foot or \$150 - \$175 per month.

For all the confidential financial information and a private showing, call Tim Leigh: 719-337-9551 or Holly Trinidad: 719-337-0999

Property Details



Sales Price
\$250,000



Building Size
1,000 - 20,000 SF



Zoning
BP

Rev: December 22, 2025



Galley Road Light Industrial Condos

4725 GALLEY ROAD, COLORADO SPRINGS, CO 80915



Rev: December 22, 2025



Our Network Is Your Edge

All information is from sources deemed reliable and is subject to errors, omissions, change of price, rental, prior sale, and withdrawal without notice. Prospect should carefully verify each item of information contained herein.

Tim Leigh

C: 719.337.9551

O: 719.630.2277

Tim@HoffLeigh.com

Holly Trinidad

C: 719.337.0999

O: 719.630.2277

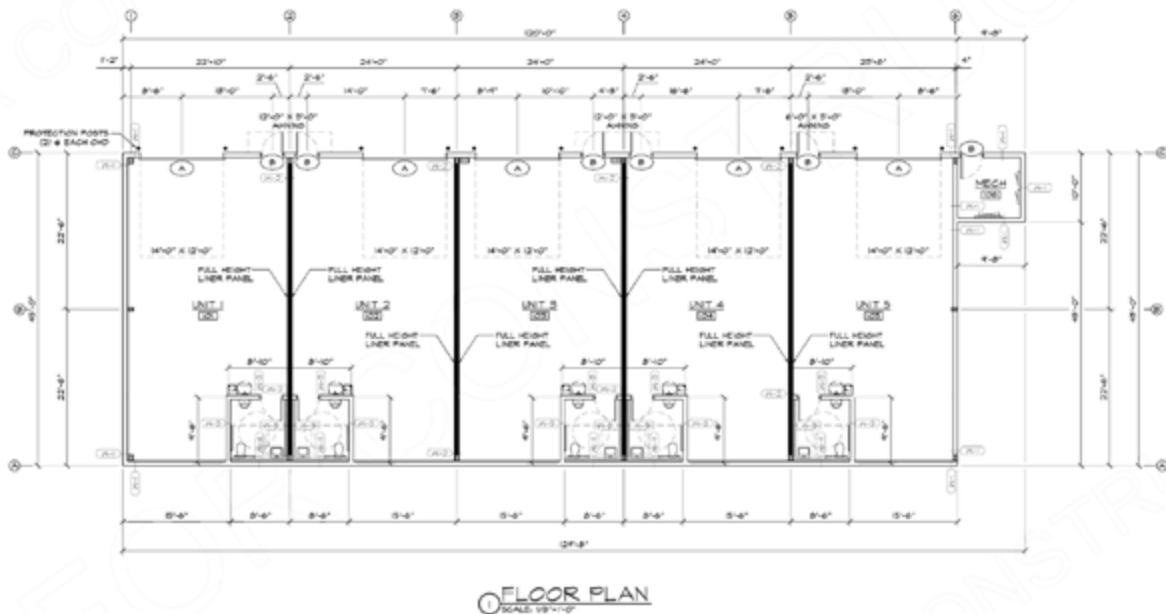
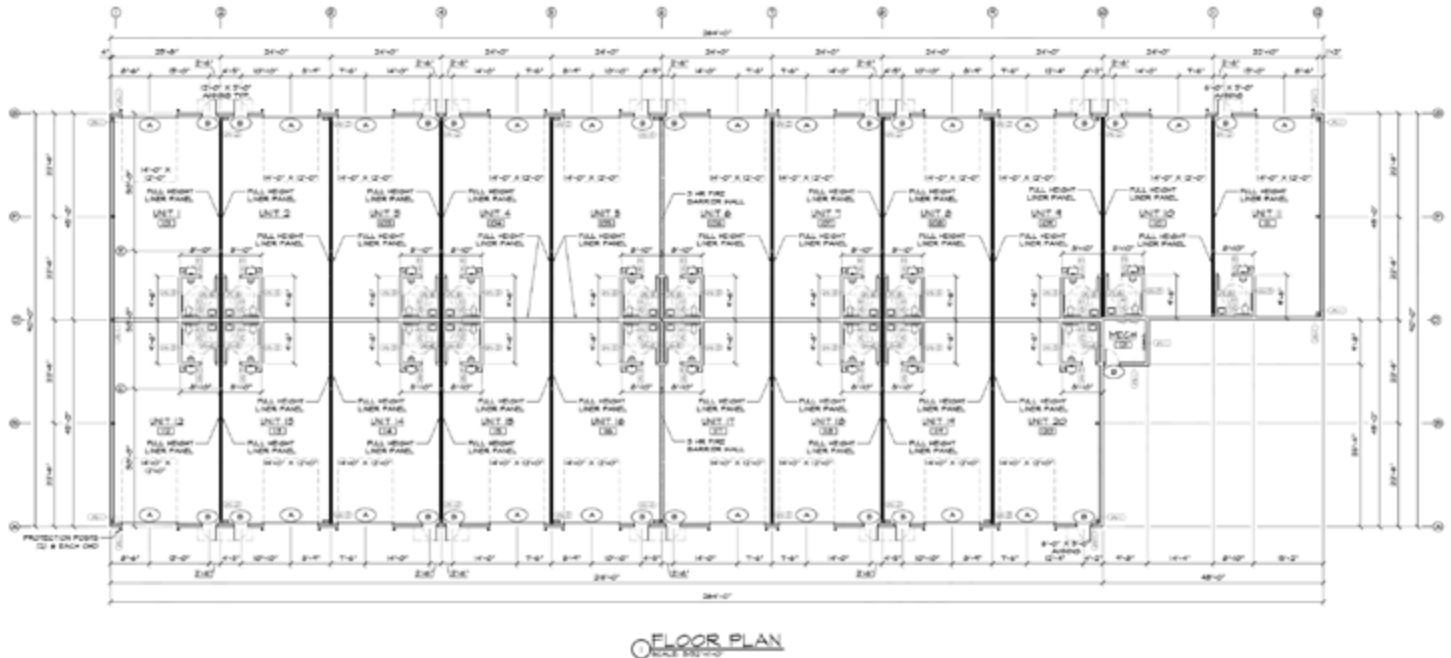
Holly@HoffLeigh.com

Galley Road Light Industrial Condos

4725 GALLEY ROAD, COLORADO SPRINGS, CO 80915

Pre-Construction Floor Plan

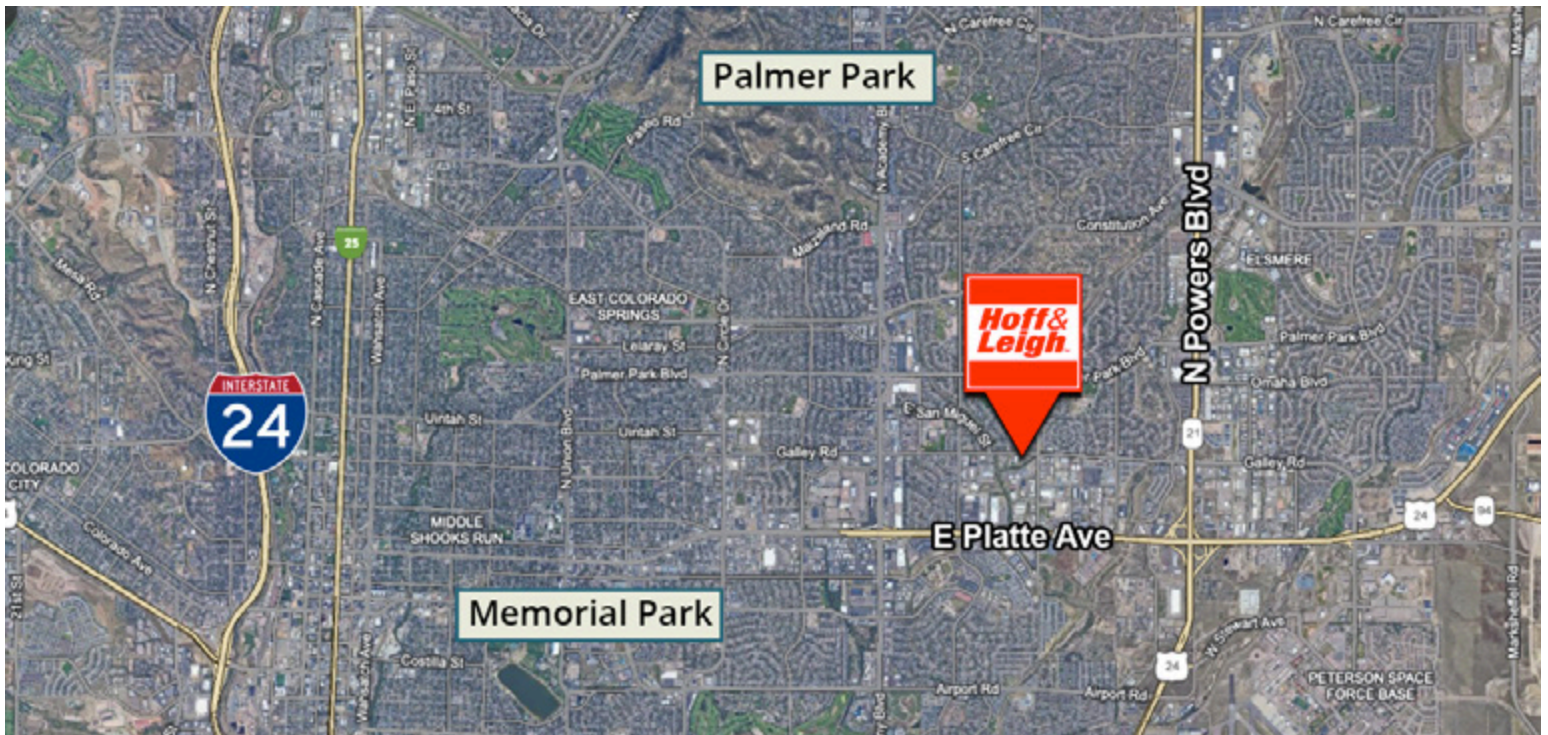
4725 Galley Road, Colorado Springs, CO 80915



Rev: December 22, 2025

Galley Road Light Industrial Condos

4725 GALLEY ROAD, COLORADO SPRINGS, CO 80915



Rev: December 22, 2025

Our Network Is Your Edge

All information is from sources deemed reliable and is subject to errors, omissions, change of price, rental, prior sale, and withdrawal without notice. Prospect should carefully verify each item of information contained herein.

Tim Leigh

C: 719.337.9551

O: 719.630.2277

Tim@HoffLeigh.com

Holly Trinidad

C: 719.337.0999

O: 719.630.2277

Holly@HoffLeigh.com